

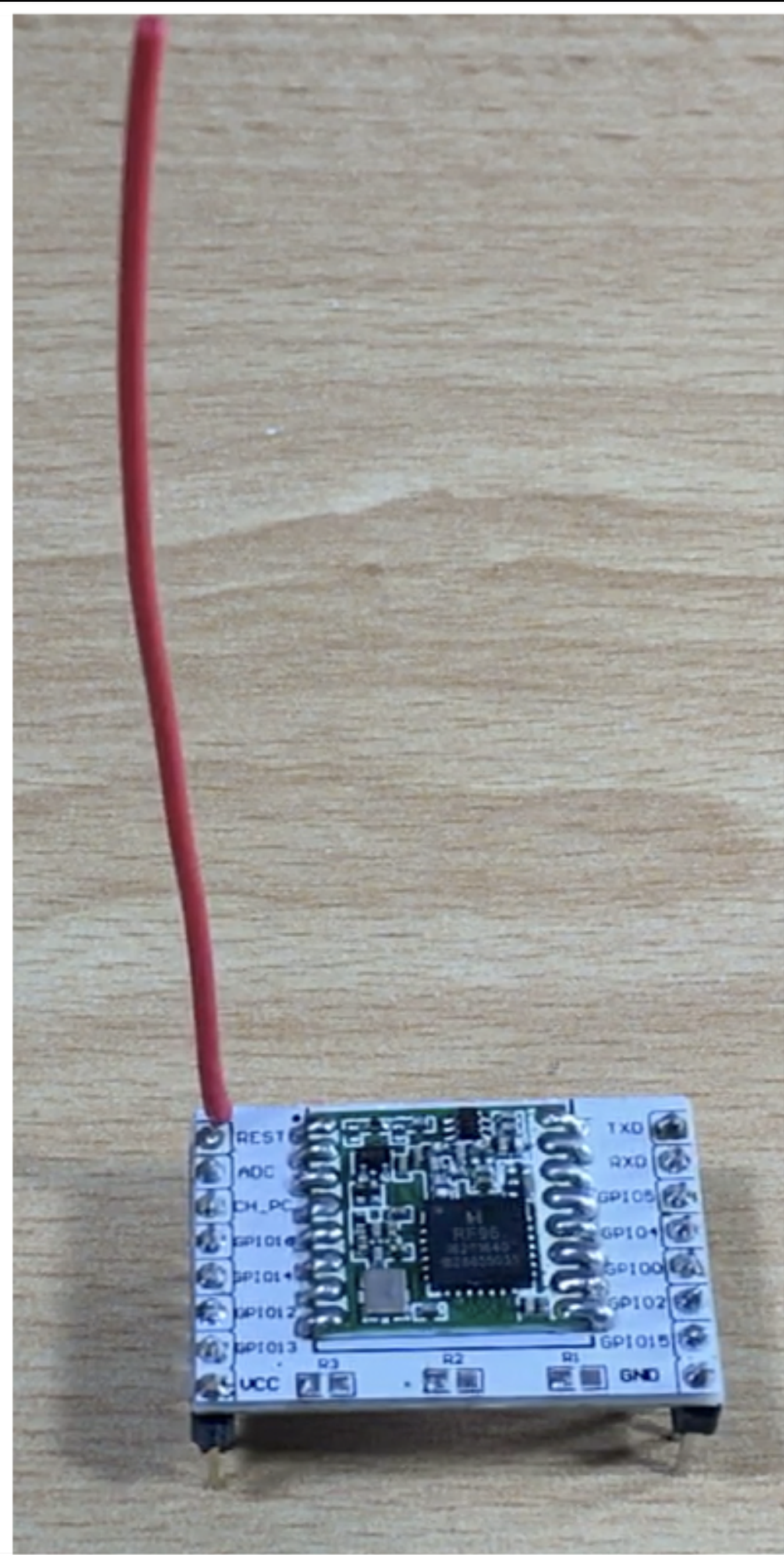
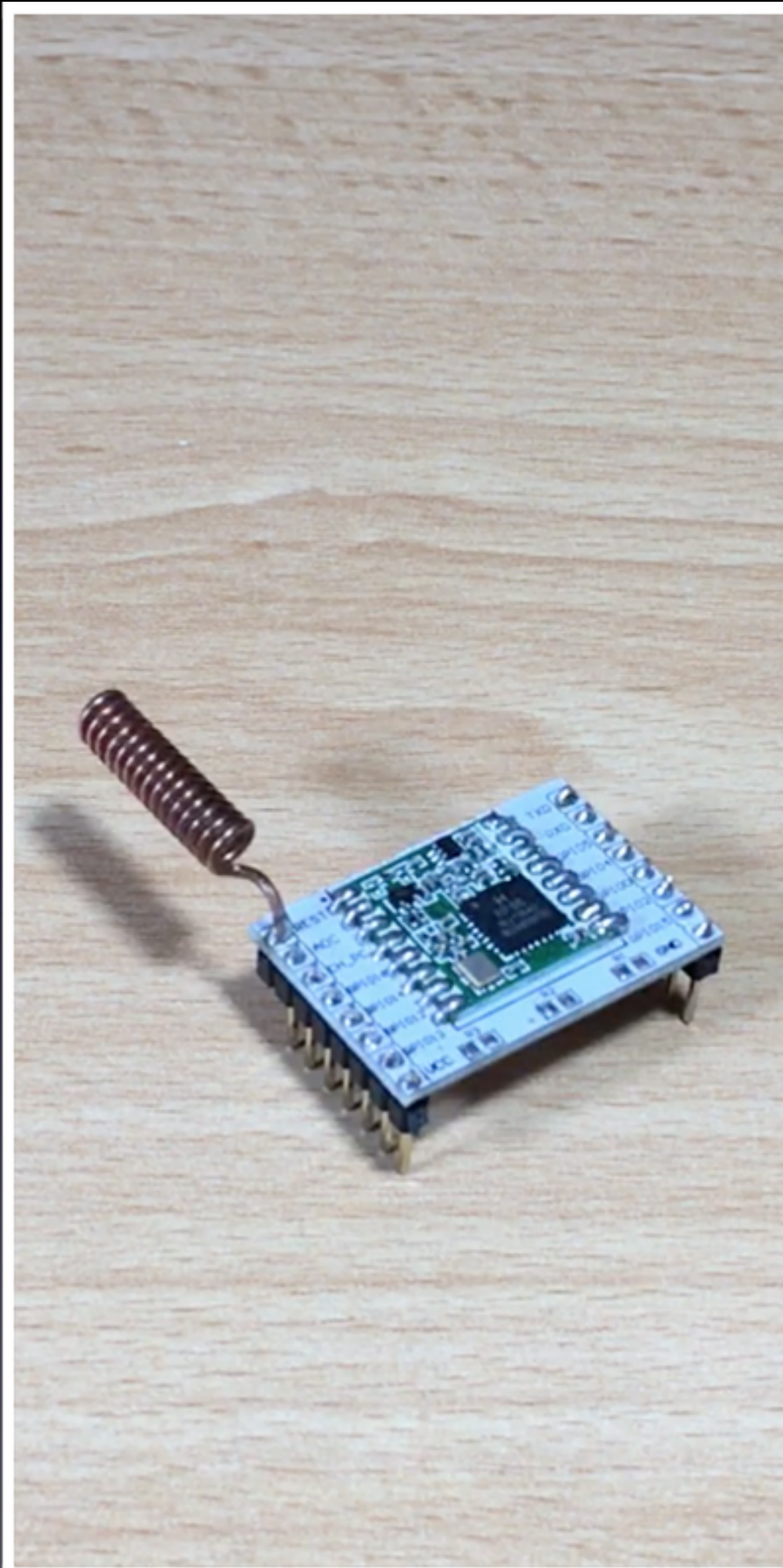
mobilefish.com

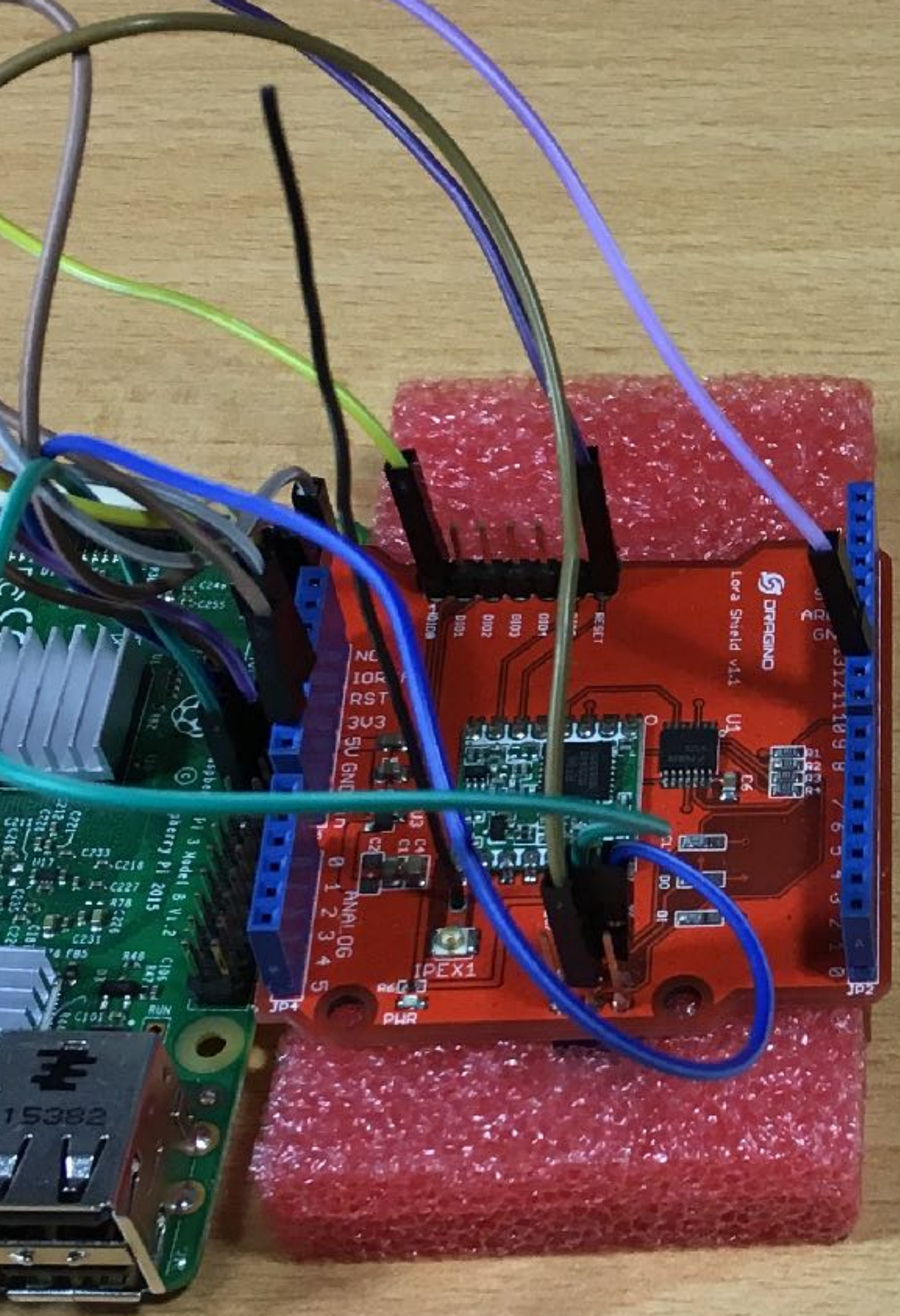
**COIL
ANTENNA**

VS

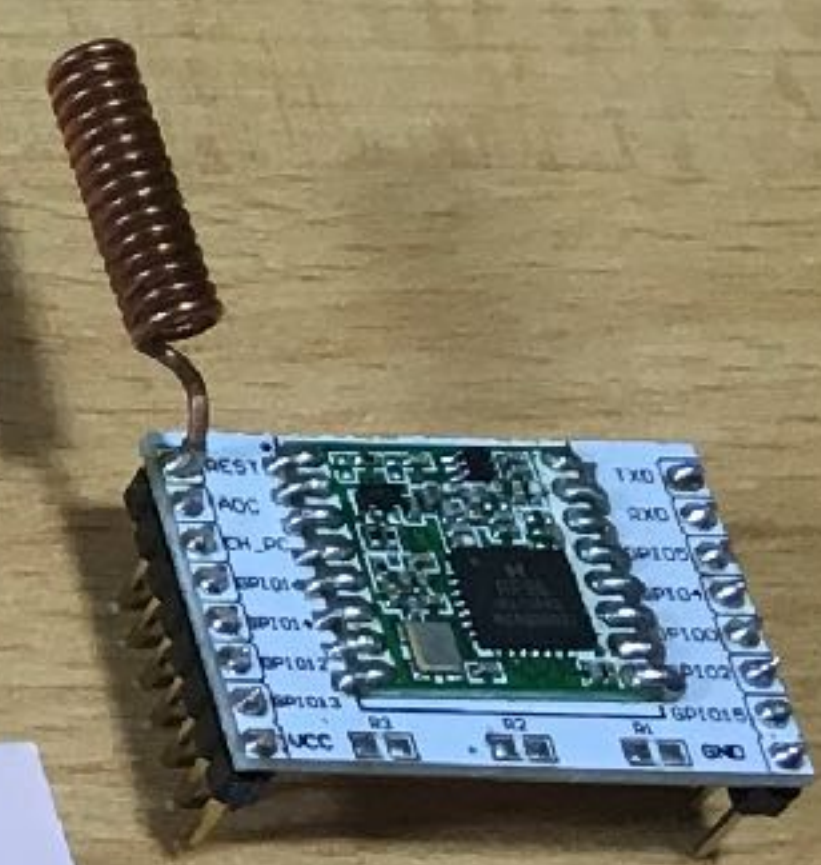
**WIRE
ANTENNA**

REVISITED

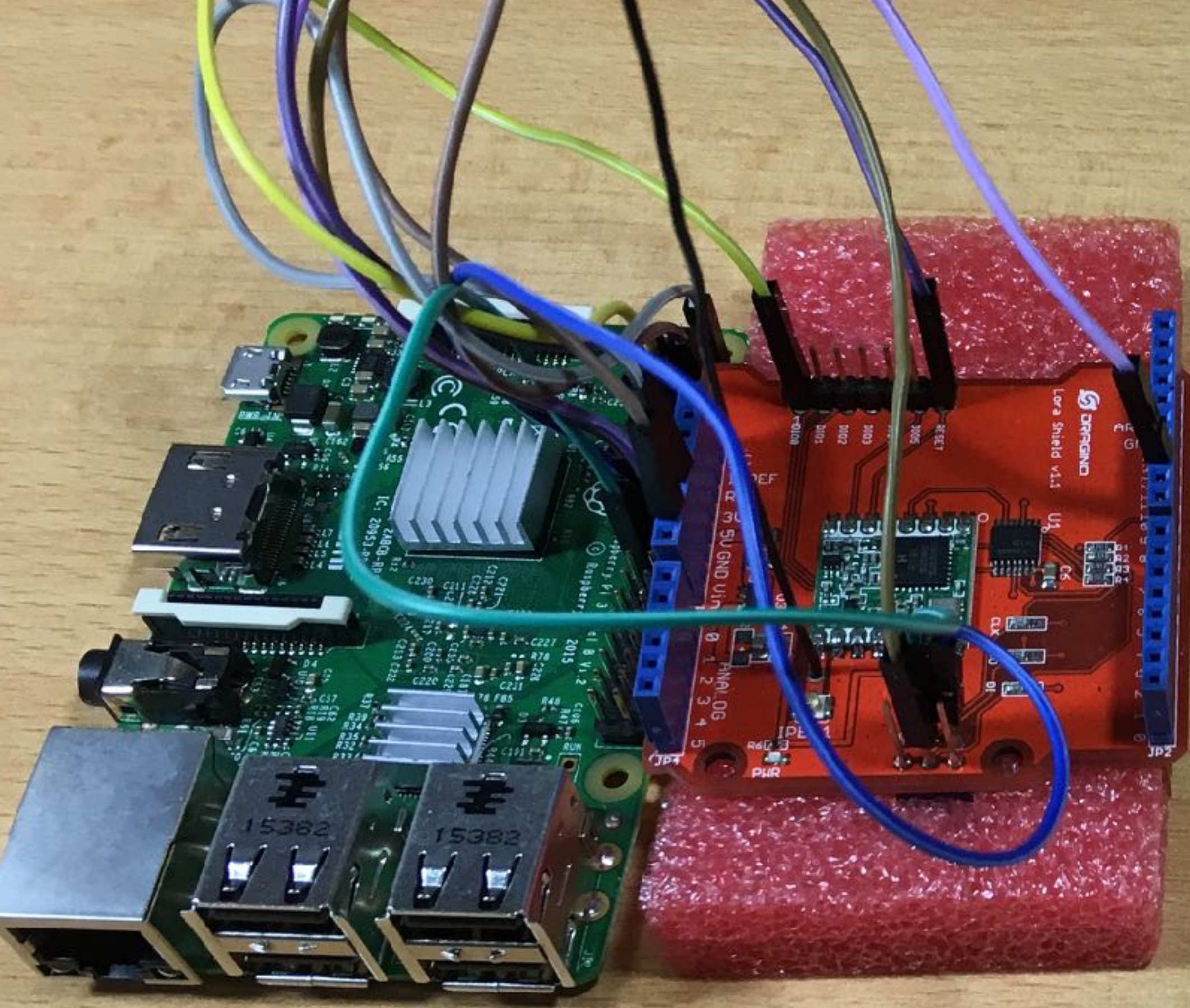




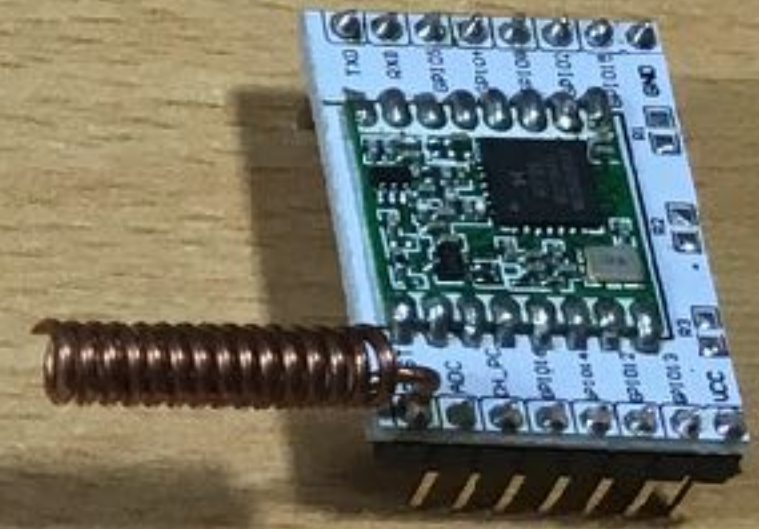
Test A
RSSI = -46



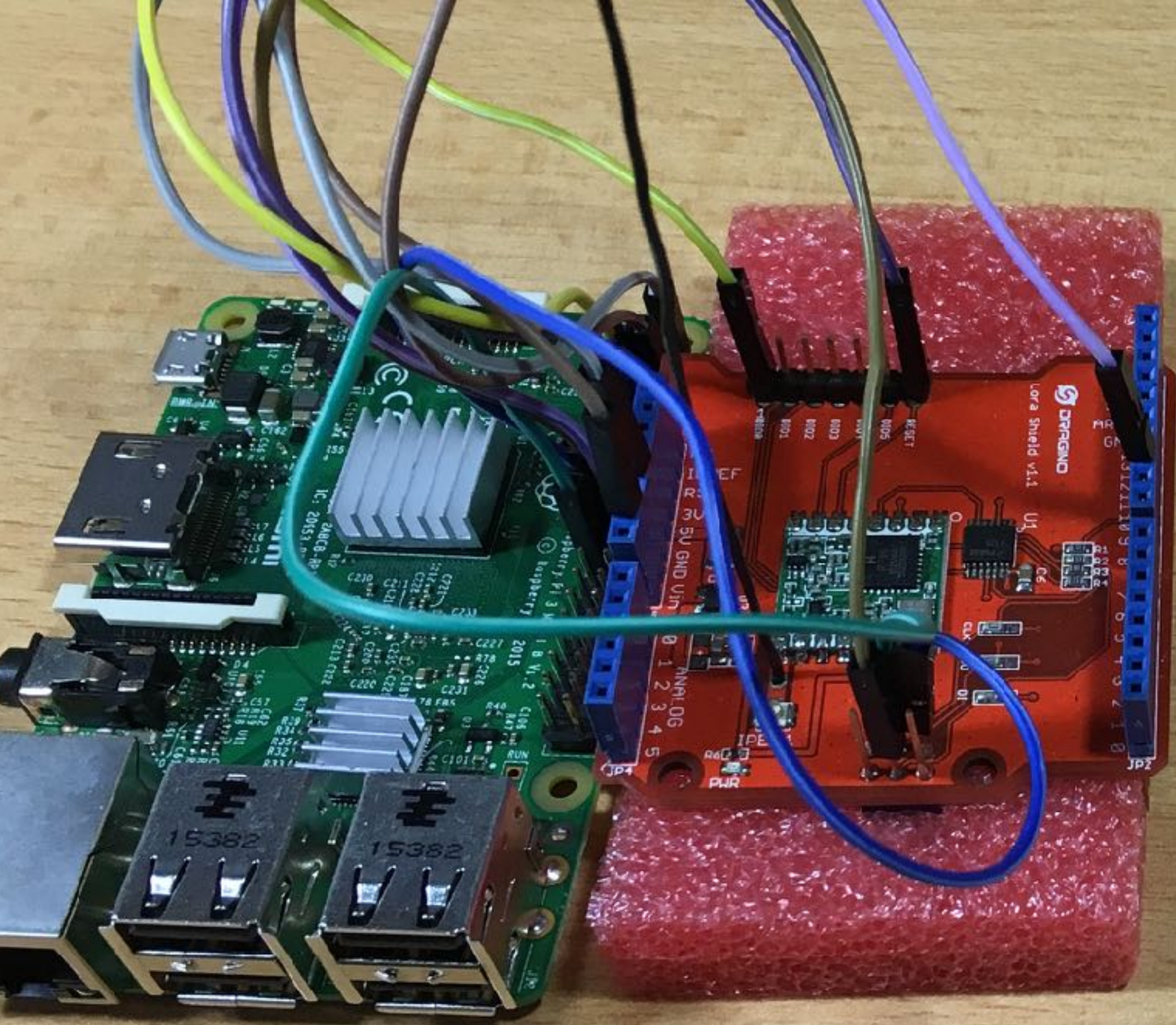
←————→
ANTENNA TO ANTENNA
DISTANCE ~ 5 METER



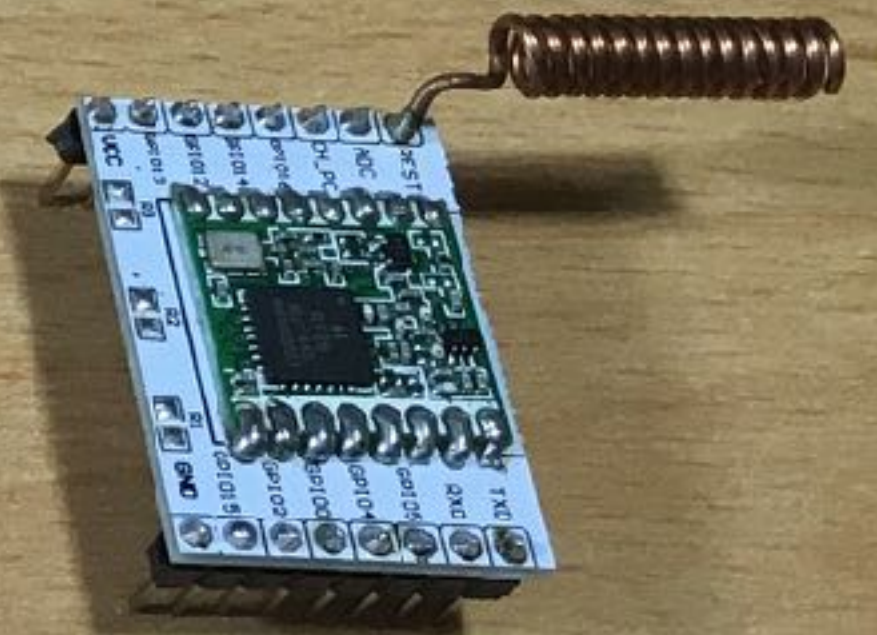
Test B
RSSI = -47



←————→
ANTENNA TO ANTENNA
DISTANCE ~ 5 METER

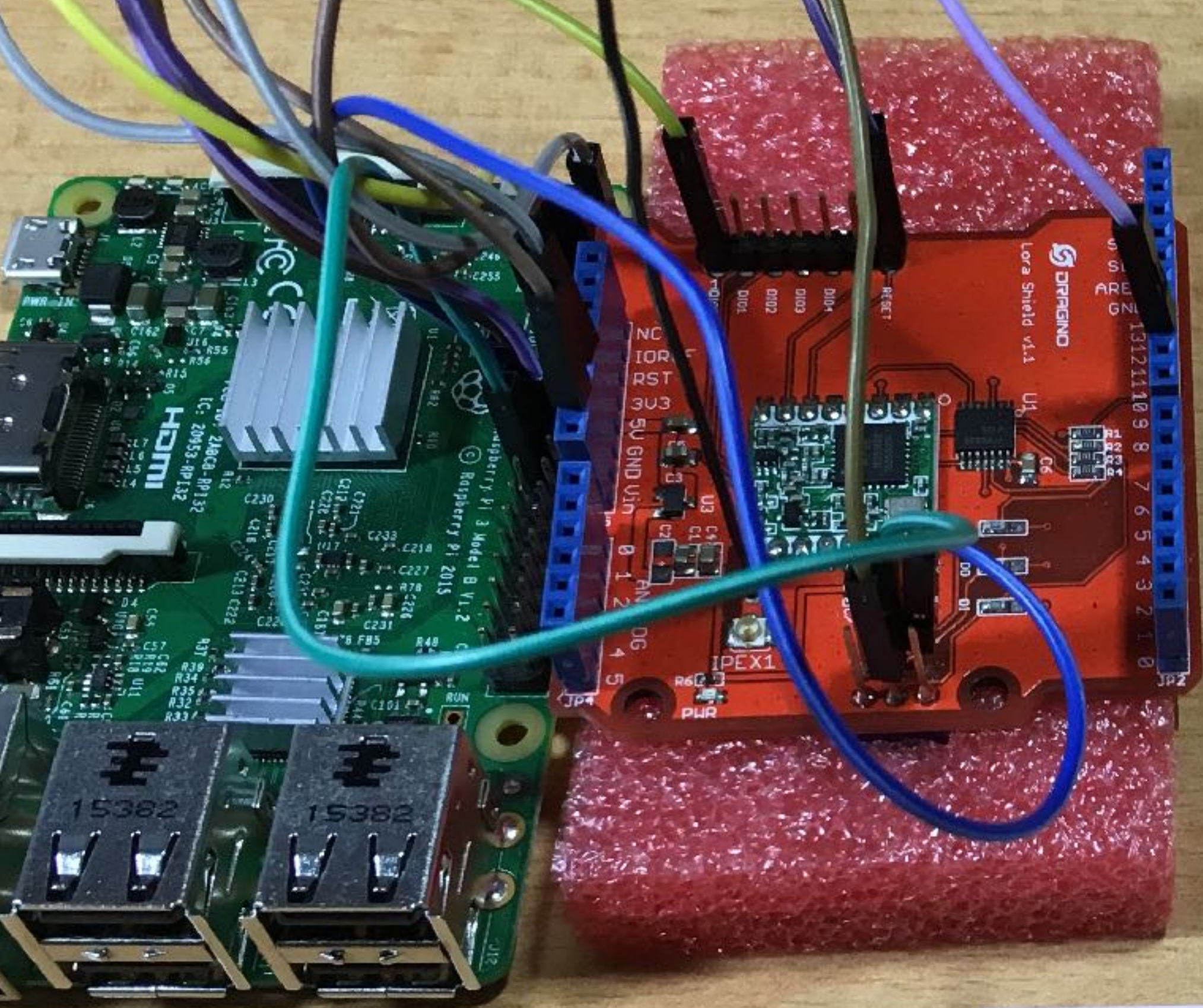


Test C
RSSI = -46

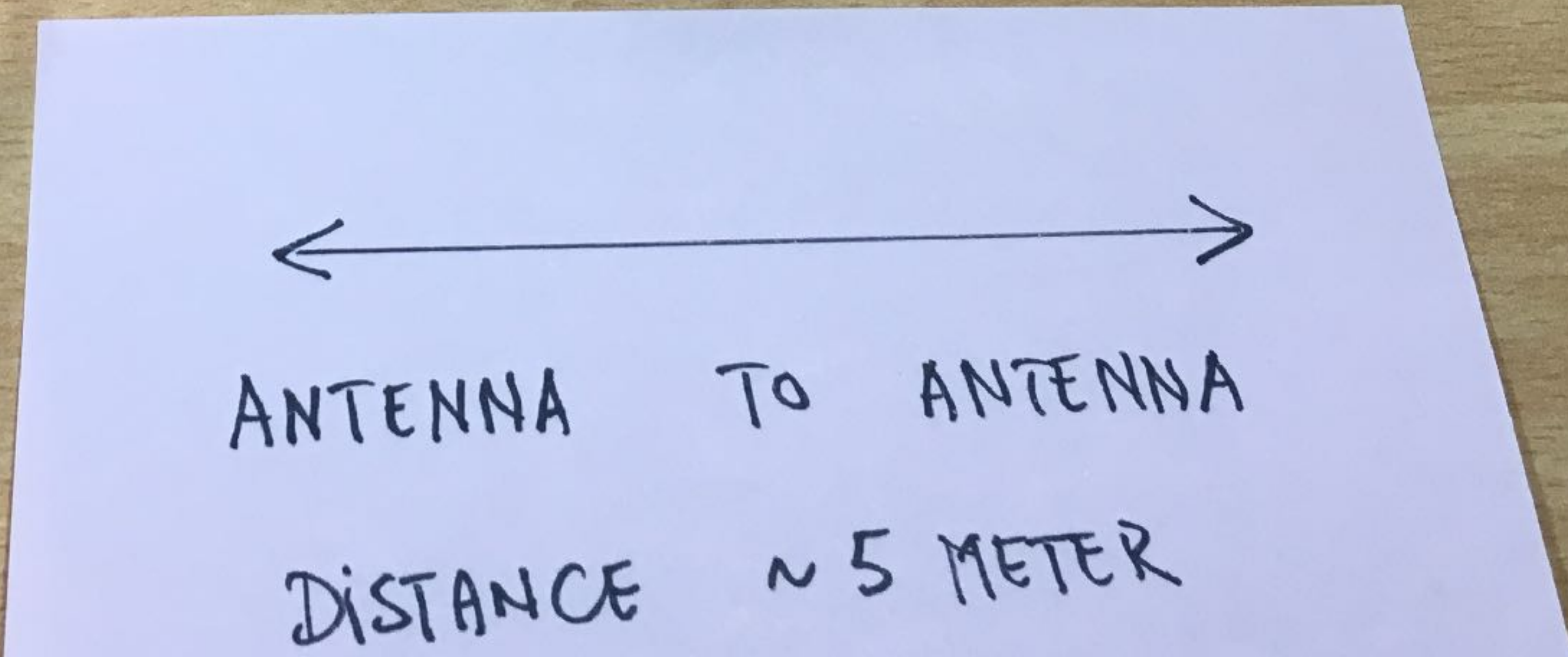


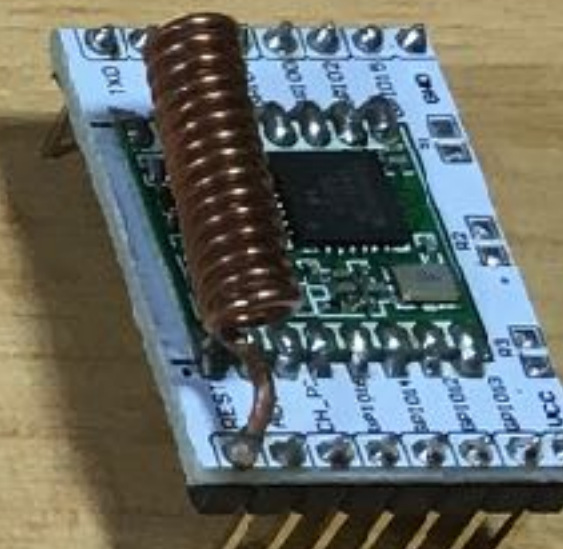
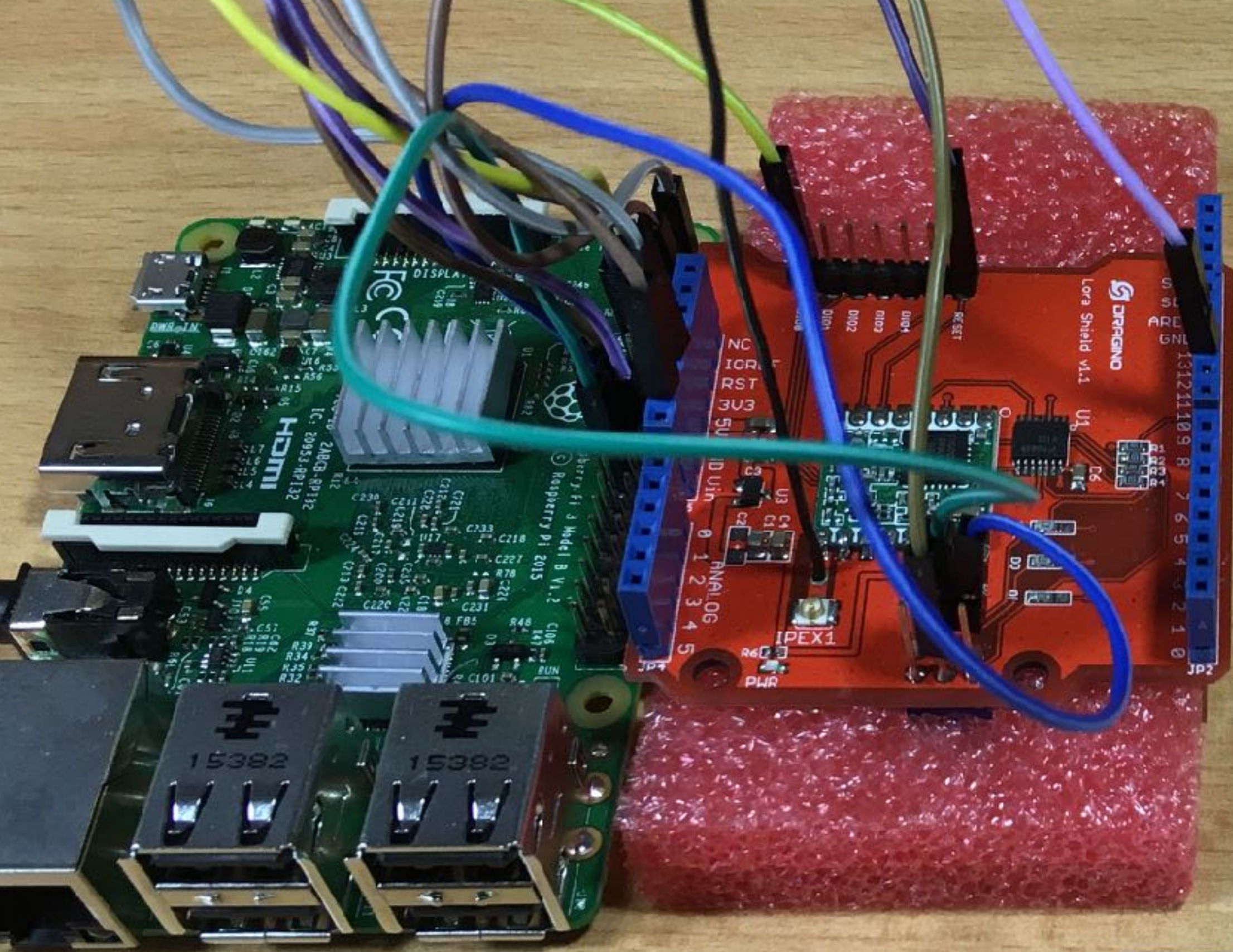
ANTENNA TO ANTENNA

DISTANCE ~ 5 METER



Test D
RSSI = -63





Test E
RSSI = -68



ANTENNA TO ANTENNA

DISTANCE ~ 5 METER

CONCLUSION

Test	Description	RSSI
A	LoRa node with coil antenna horizontally oriented, away from the LoRa module perpendicular to Gateway	-46
B	LoRa node with coil antenna horizontally oriented away from the LoRa module, pointing to Gateway	-47
C	LoRa node with coil antenna horizontally oriented away from the LoRa module, pointing away from Gateway	-46
D	LoRa node with coil antenna vertically oriented away from the LoRa module	-63
E	LoRa node with coil antenna horizontally oriented above the LoRa module	-68
F	LoRa node with wire antenna (86mm, 868Mhz)	-50

CONCLUSION

